



108 The Gables

Widdrington, Morpeth NE61 5RB

- Well presented
- quiet popular location
 - Lounge
 - Conservatory
- Gas central heating
- Ground floor apartment
 - Entrance porch
 - Fitted Kitchen
- Two double fitted bedrooms
 - Double glazing

£550 Per Month



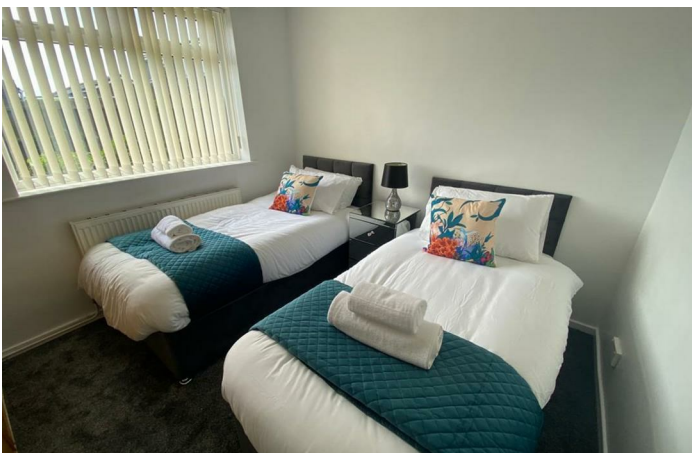


This apartment is the perfect place to relax and unwind. Explore the sights and local attractions of Northumberland – there is so much to see and do here.

Entrance porch leads into good sized Lounge, Fitted Kitchen with range of base and wall units which leads to Double glazed conservatory which is ideal for Dining room, White bathroom suite comprising panelled bath with shower over, Low level WC and wash hand basin, Main bedroom to the front with built in wardrobes, second double bedroom at the rear also with fitted robes.

To the rear is a good sized garden, shed and access gate.

Available now







Local Authority
Council Tax Band Exempt
EPC Rating
Deposit
Furnishing Unfurnished

Energy Efficiency Rating		
	Current	Potential
Very energy efficient - lower running costs		
(92 plus) A		
(81-91) B		
(69-80) C		
(55-68) D		
(39-54) E		
(21-38) F		
(1-20) G		
Not energy efficient - higher running costs		
England & Wales		
EU Directive 2002/91/EC		

Environmental Impact (CO ₂) Rating		
	Current	Potential
Very environmentally friendly - lower CO ₂ emissions		
(92 plus) A		
(81-91) B		
(69-80) C		
(55-68) D		
(39-54) E		
(21-38) F		
(1-20) G		
Not environmentally friendly - higher CO ₂ emissions		
England & Wales		
EU Directive 2002/91/EC		



ML Estates Lettings Office
27 Avenue Road, Seaton Delaval, Tyne
And Wear, NE25 0DT

Contact
0191 237 60 60
lettings@mlestates.co.uk
www.mlestates.co.uk

Agents Note: Whilst every care has been taken to prepare these particulars, they are for guidance purposes only. All measurements are approximate and for general guidance purposes only and whilst every care has been taken to ensure accuracy, they should not be relied upon and potential buyers/tenants are advised to recheck the measurements.